

Landscape concept package



Capricorn Battery Energy Storage System (BESS)

Burnett Highway, Bouldercombe QLD

January 2025

INDEX

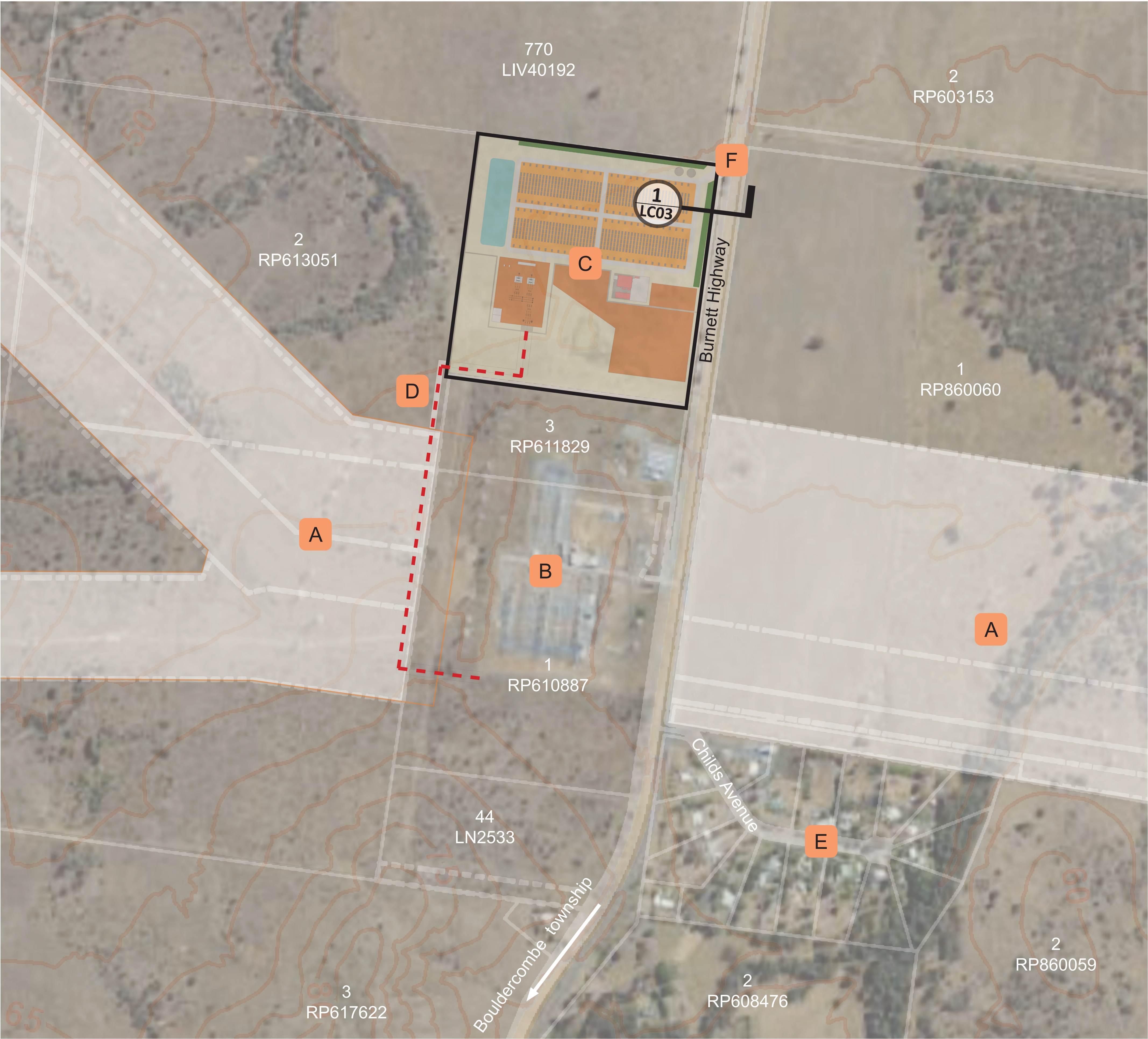
LC00 - COVER PAGE

LC01 - CONTEXT PLAN

LC02 - DETAIL PLAN

LC03 - BUFFER DETAILS

LC04 - PLANTING PALETTE



LEGEND

- A** Powerlink's Transmission Line Easement
- B** Powerlink's Bouldercombe Substation
- C** New Capricorn BESS Site
- D** New cable connection and easements between site and substation
- E** Residential Estate
- F** Main Entry to Site

--- New power cable alignment

— Proposed site

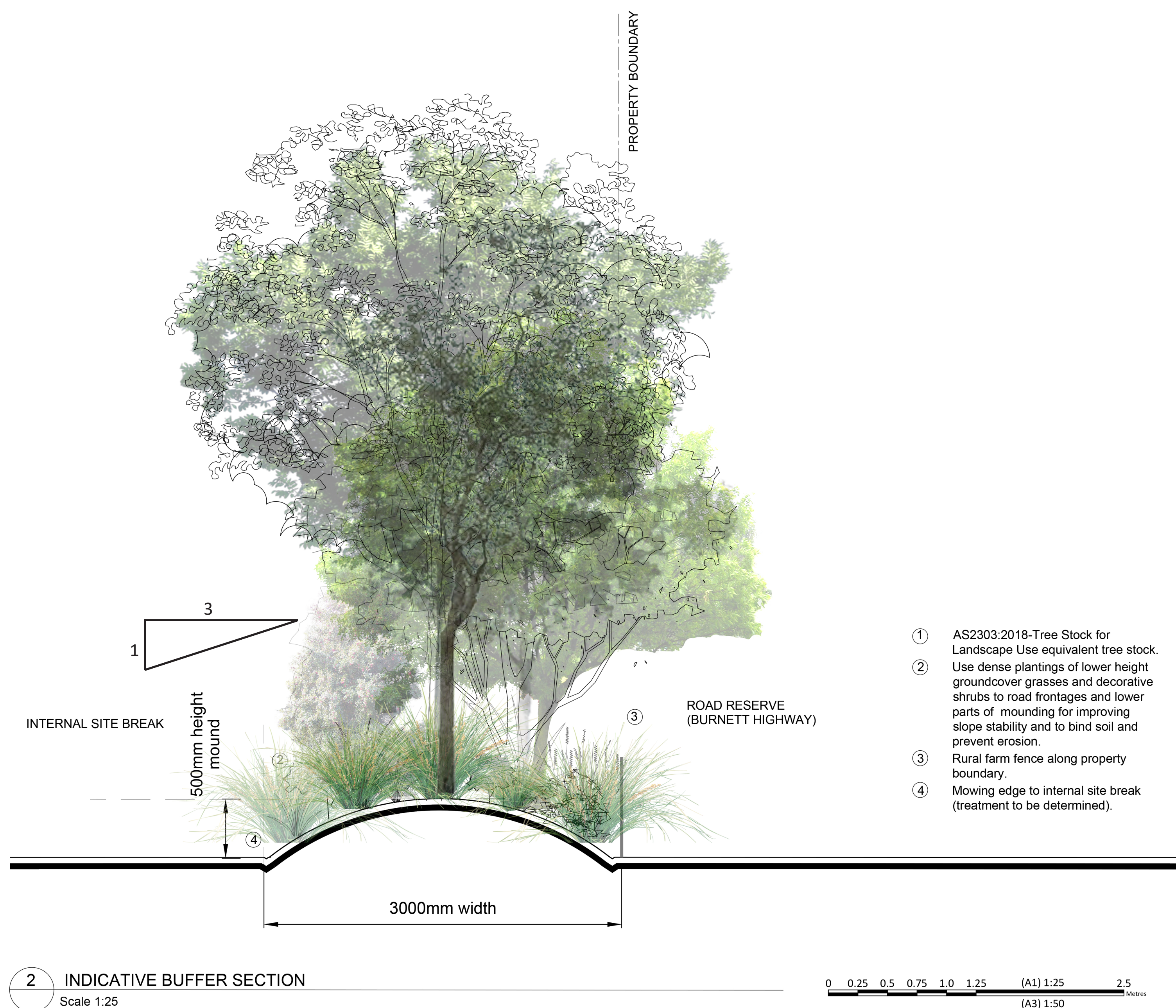
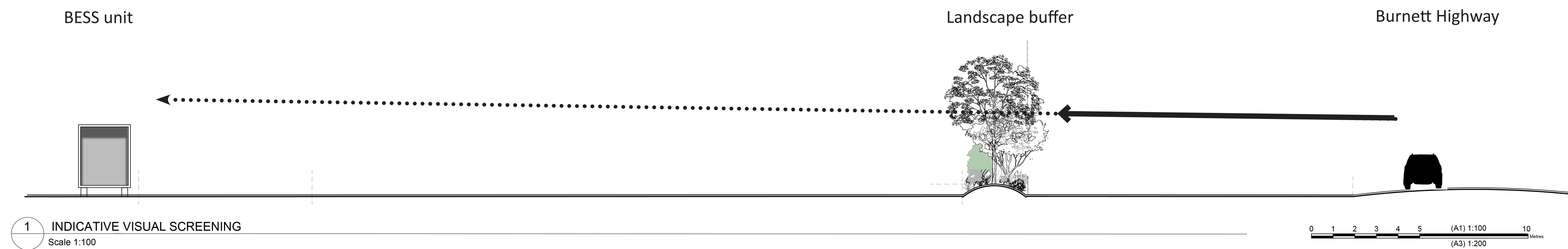
— Landscape buffer

Site context plan

Proposed Battery Energy Storage System (BESS), Bouldercombe
for Potentia Energy



PROJECT:	PLAN:	REV:	NORTH:
244023	LC01	A	
SCALE:	1:10,000 @ A1		
DATE:	JAN 2025		
FILE:	244023 LCP_A.indd		



Vegetation buffer strategy:

The objective of the vegetation buffer is to provide a dense and fast-maturing (5 years) screen to filter views from the Burnett Highway to the proposed BESS development, whilst allowing opportunities for passive internal/external site surveillance, to create visual interest, scenic amenity, and increase biodiversity.

The height of the mounding is to provide a maximum 1 in 3 slope for additional screening at ground level.

Variations to the shape and visual porosity of the buffer may occur depending on the natural conditions and site variations, however, by varying the spatial planting arrangements across the length of the buffers, any deformations due to unforeseen growth patterns provide minimal disturbance to the pattern.

Vegetation buffer details

Proposed Battery Energy Storage System (BESS), Bouldercombe
for Potentia Energy



PROJECT:	PLAN:	REV:	NORTH:
244023	LC03	A	
DATE:	JAN 2025		
FILE:	244023 LCP_A.indd		

Indicative Plant List:

ID#	Botanical Name	Common Name	Height
TREES			
01	Allocasuarina torulosa	Forest She-oak	10m
02	Alphitonia excelsa	Red Ash	8m
03	Corymbia ptychocarpa	Swamp Bloodwood	12m
04	Cupaniopsis anacardoides	Tuckeroo	10m
05	Jagera pseudorhus	Foambark	15m
06	Melaleuca viridiflora	Broad-leaved Paperbark	12m
07	Syzygium australe	Lilly Pilly	8m
08	Waterhousia floribunda	Weeping Lilly Pilly	15m
SHRUBS			
09	Acacia aulacocarpa	Hickory Wattle	6m
10	Acacia leiocalyx	Black Wattle	5m
11	Breynia oblongifolia	Coffee Bush	2m
12	Clerodendron floribundum	Lolly Bush	4m
13	Hovea acutifolia	Pointed Leaf Hovea	4m
GROUNDCOVERS AND GRASSES			
14	Lomandra longifolia	Matt Rush	1.5m
15	Pultenaea villosa	Hardy Egg and Bacon	2m
16	Themeda triandra	Kangaroo Grass	1m



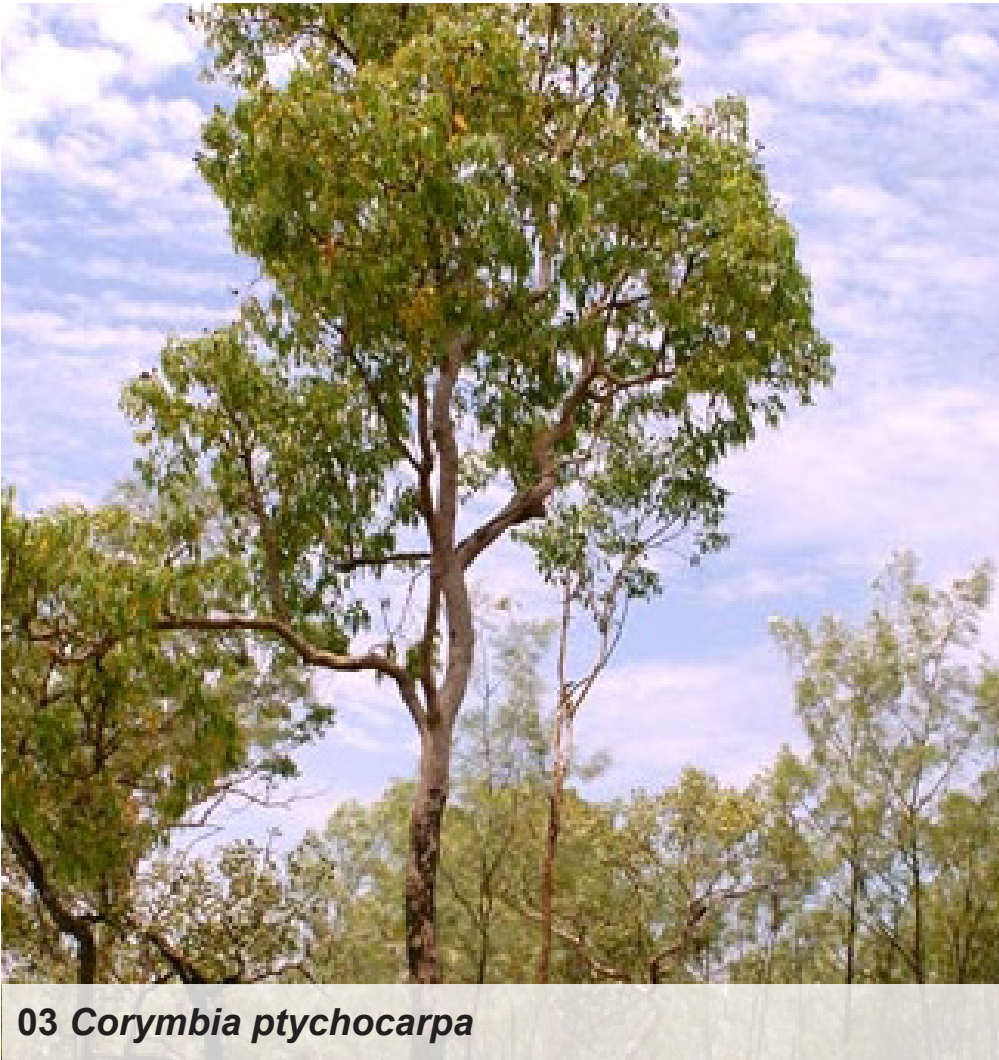
01 Allocasuarina torulosa



02 Alphitonia excelsa



07 Syzygium australe



03 Corymbia ptychocarpa



05 Jagera pseudorhus



06 Melaleuca viridiflora



04 Cupaniopsis anacardoides



08 Waterhousia floribunda



09 Acacia aulacocarpa



10 Acacia leiocalyx



11 Breynia oblongifolia



12 Clerodendron floribundum



13 Hovea acutifolia

Planting palette

Proposed Battery Energy Storage System (BESS), Bouldercombe
for Potentia Energy



PROJECT:	PLAN:	REV:	NORTH:
244023	LC04	A	
DATE:	JAN 2025		
FILE:	244023 LCP_A.indd		