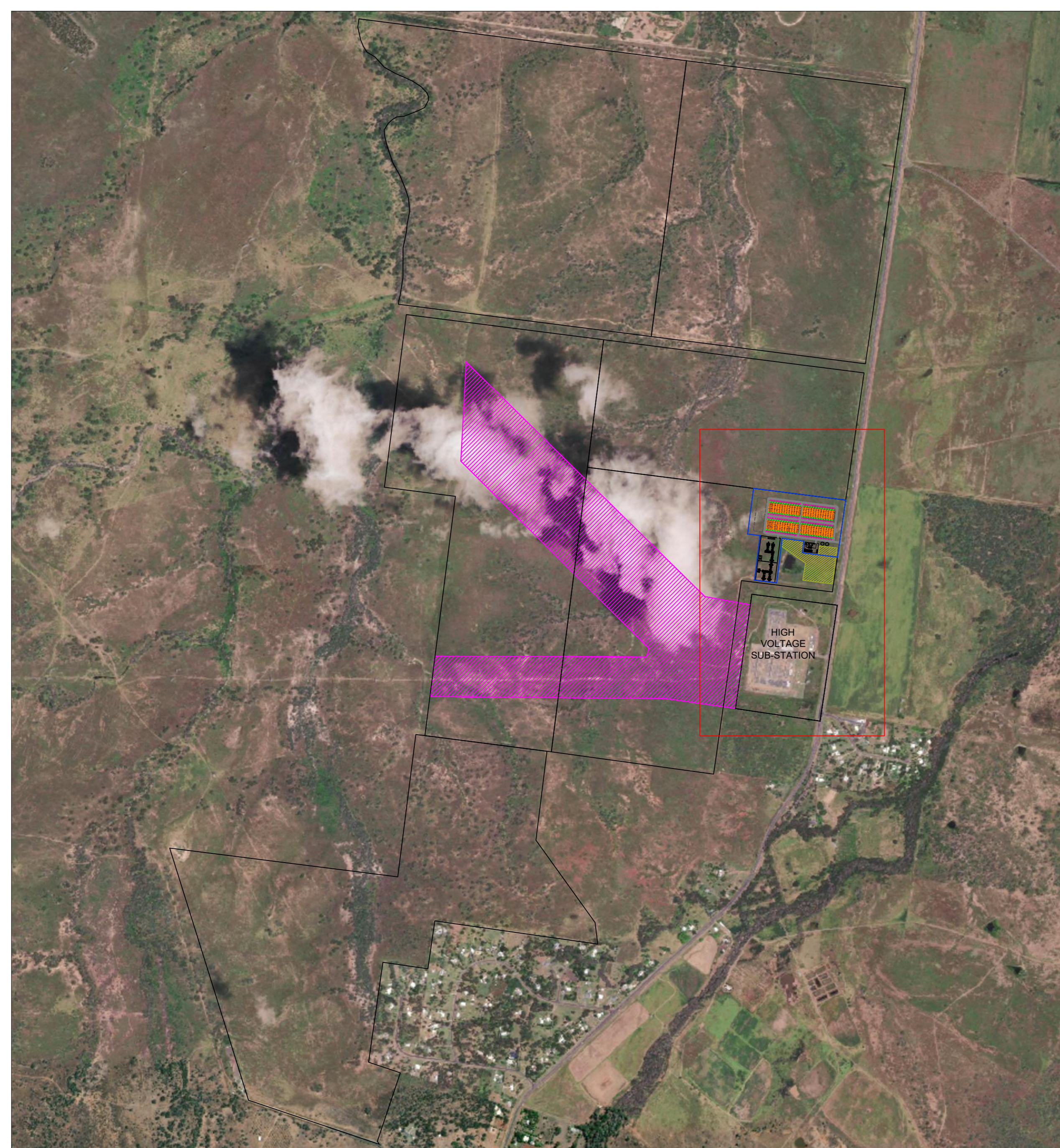


LEGEND

	ROAD
	SITE BOUNDARY
	POWER CONVERSION UNIT
	INVERTER BLOCK
	BATTERY BLOCK
	LAYDOWN AREA

BESS SPECIFICATIONS	
DESCRIPTION	QTY
RATED POWER (MW)	399
RATED ENERGY (MWh)	1575
USEFUL POWER (MW)	319.2
USEFUL ENERGY (MWh)	1354.5
BESS DURATION	4.24h
BESS CONTAINER MODULE	SAFT I-Shift
NUMBER OF BESS CONTAINERS	525
BESS CONTAINER CAPACITY (MWh)	3.0
POWER CONVERSION EQUIPMENT	SMA SCS UP-XT
NUMBER OF POWER CONVERSION EQUIPMENT	105
POWER CONVERSION EQUIPMENT POWER (MW)	3.8

SITE OVERVIEW



HIGH
VOLTAGE
SUB-STATION

8	11/07/2024	Updated layout to allow for switchyard	Sold Engr						
7	27/05/2024	Changed number of BESS containers/inverter from 6x2600MWh to 5x300h	Sold Engr						
6	29/04/2024	Increased number of inverters to 105	Sold Engr						
5	04/03/2024	Upgraded Substation to include 2 Power TX's	Sold Engr						
REV.	DATE	DESCRIPTION	PREPARED BY	COLLABORATORS	VERIFIED BY	VALIDATED BY			
PROJECT: Capricorn Creek BESS (Australia)									
FILE NAME:							UTILIZATION SCOPE:		
CLASSIFICATION:									
Engineering & Construction									
FORMAT:	SCALE:	TITLE: PRELIMINARY GENERAL BESS LAYOUT							
PLDT SCALE:	SHEET:								
GRCODE									
GROUP	FUNCTION	TYPE	ISSUER	COUNTRY	TEC	PLANT	SYSTEM	PROGRESSIVE	REVISION
G	R	E	E	C					D B

This document is property of Enel Green Power S.p.A. It is strictly forbidden to reproduce this document, in whole or in part, and to provide to others any related information without the previous written consent by Enel Green Power S.p.A.